

XANTÉ X-98™



Larger 55"x98" Full Bleed!

**CAN FIT THROUGH
ANY DOORWAY!**

PRINT ON VIRTUALLY ANY MEDIA!

CMYK + WWWW

UP TO 2880 DPI RESOLUTION

PHOTO-REALISTIC COLOR

12-UP SIGN PRODUCTION

PRINT ON MEDIA UP TO 3 INCHES TALL

POWERFUL DUAL LED LAMPS

(Instant Ink Curing)



Ultra-Wide Gamut Eco-UV Inks



US: 251.473.6502
EU: +31 (0) 26.319.3210
xante.com

BEST. EVER.

The ECO-UV Printer More Versatile Than Ever

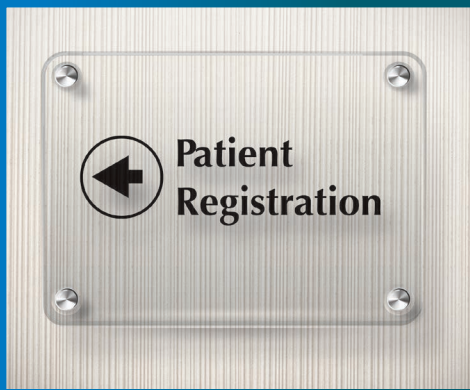
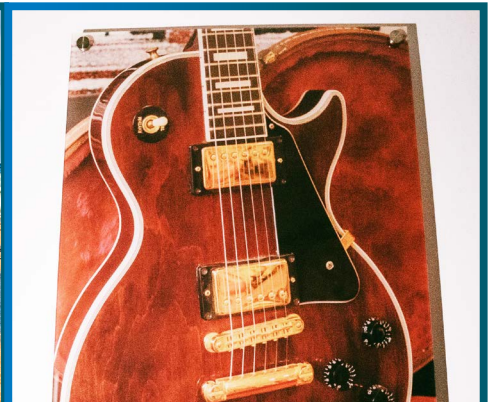
Designed for high-volume, large sign production, the X-98 is also more photo-realistic. Speed and quality are not sacrificed. Whether it's long-life outdoor signage or indoor photo-realistic UV prints, the X-98 can do it all. The 55"x98" full bleed bed is large enough and small enough for your shop.



Large flatbed printers designed for signage and graphics print at high speeds, but are limited by substrate thickness. Small format printers designed for specialty items print at slower speeds and are limited by substrate length and width.

*The Xanté family of X-UV Printers do **BOTH**.
It's the best of both worlds.*

Signage • Manufacturing • Specialty Items • Industrial



CONTACT US TODAY FOR MORE INFORMATION.

251.473.6502

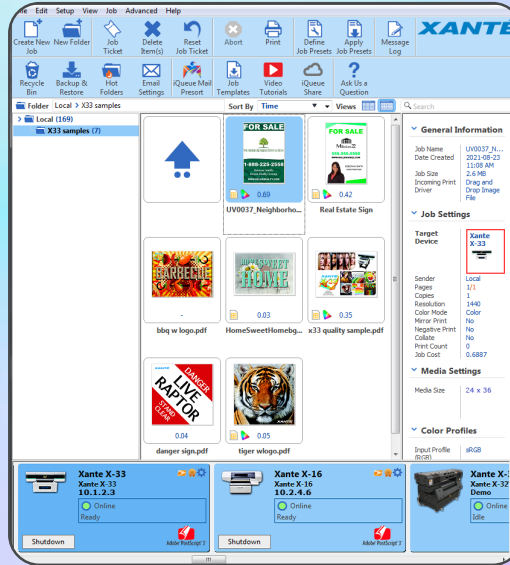
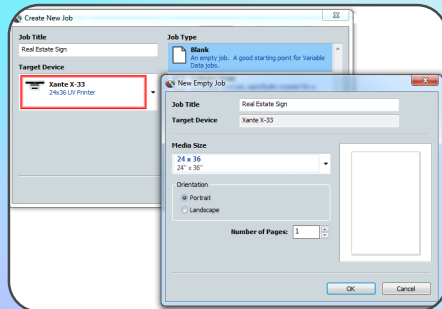


Welcome to iQueue Prepress Software

Xante builds on its innovative workflow software with powerful team-based productivity in iQueue 14. True server-client operation enhances your workflow to optimize the talents and time of everyone involved in production. Take advantage of your entire team of IT

Simply Brilliant Color Workflow

Create a new job or simply drag and drop your file into the queue.



iQueue features include:

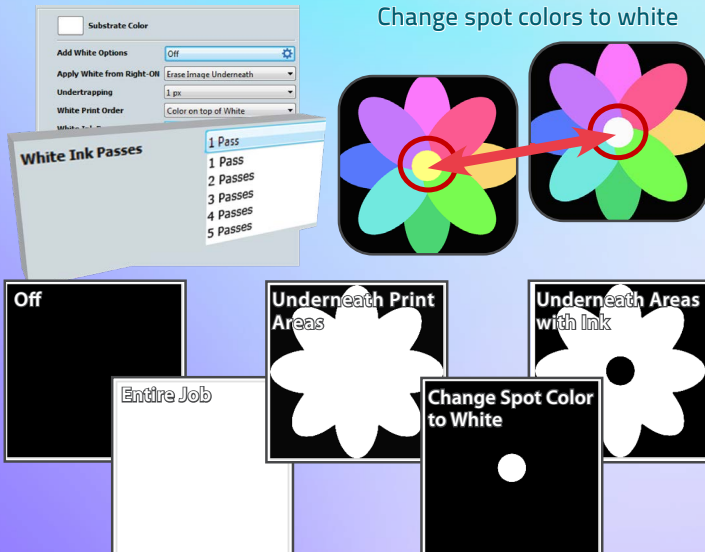
- Fully Independent CMYK Controls
- PANTONE® Color Library
- Right-ON® Spot Color Matching
- Full Imposition and Tiling
- QR Code Generator
- PDF-Out AND SO MUCH MORE!

specialists, designers, and printer operators to simplify prepress tasks such as job sharing and job cost estimating, file editing tools, patented Right-ON® Spot Color Matching and much more. Create attention-grabbing displays with VividHD-UV ink. And, with instant curing, your customers will appreciate the fast, durable results.

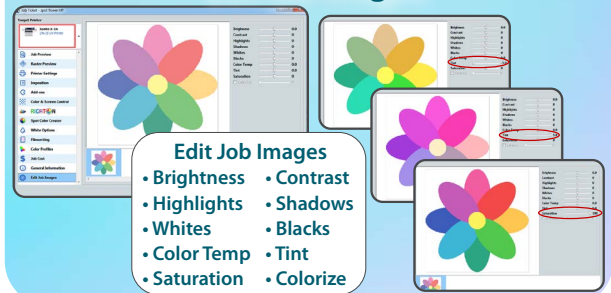
White Options

Build depth with layers of white

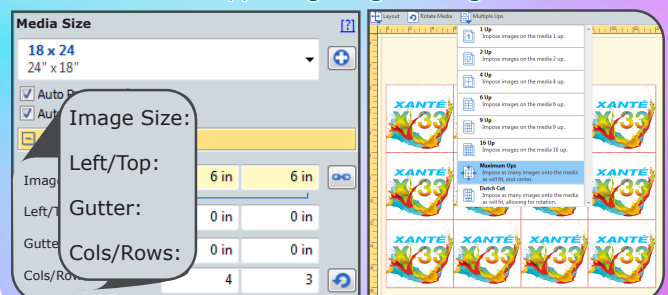
Change spot colors to white



Edit Job Images



Imposition allows you to optimize your page layout by placing images in the maximum number of columns and rows while also supporting margins and gutters.





SPECIFICATIONS



PRINTING CAPABILITIES

| | |
|---------------------------|---|
| Imaging area: | 55" x 98" (139.7cm x 248cm) |
| Max. media size: | 55" x 98" (139.7cm x 248cm) |
| Min. media size: | .5" x .5" |
| Max. print height: | 3" (7.62cm) |
| Print colors: | CMYK + WWWW |
| Resolution: | 720/1080/1440/2160/2880 DPI Resolutions |
| UV lamp: | Dual LED, low heat curing lamps |

INK AND MEDIA

| | |
|---------------------|---|
| Ink type: | UV, 500 mL bottles per color The maximum shelf life is 1 (one) year from Date of Manufacture (DoM). Once opened, the shelf life is 2 (two) months or 1 (one) year from DoM, whichever comes first. |
| Media types: | PVC plastic, styrene, wood, aluminum, metal, acrylics, coroplast, ceramics, fabric, leather composites, paperboard, foamboard, glass, carpet, tile and more |

PRINTER CONNECTIVITY

1-Gigabit Ethernet

PREPRESS SOFTWARE

| | |
|-------------------------------|---|
| Xanté iQueue Workflow: | Adobe® PostScript® 3™/PDF Workflow, Independent CMYK Density Control, Spot Color Matching, Imposition, Digital File Editing, Variable Printing, and much more |
|-------------------------------|---|

WEIGHTS, DIMENSIONS

| | |
|--------------------------|---|
| Dimensions: | 135"L x 95"W x 50"H (343 x 242 x 127cm) |
| Net/Gross weight: | 1166lbs (530kg) |
| Power supply: | 110v or 220v 50-60hz |

WORKING CONDITION

| | |
|-------------------------------|-----------------------|
| Operating temperature: | 22-26°C (68°F - 78°F) |
| Relative humidity: | 50-80RH |

XANTÉ

US: 251.473.6502
EU: +31 (0) 26.319.3210

xante.com



Adobe® PostScript® 3™



**iQueue Simply Brilliant
Workflow (Included)**

Digital Color Workflow with Advanced Color
Matching and File Management Tools